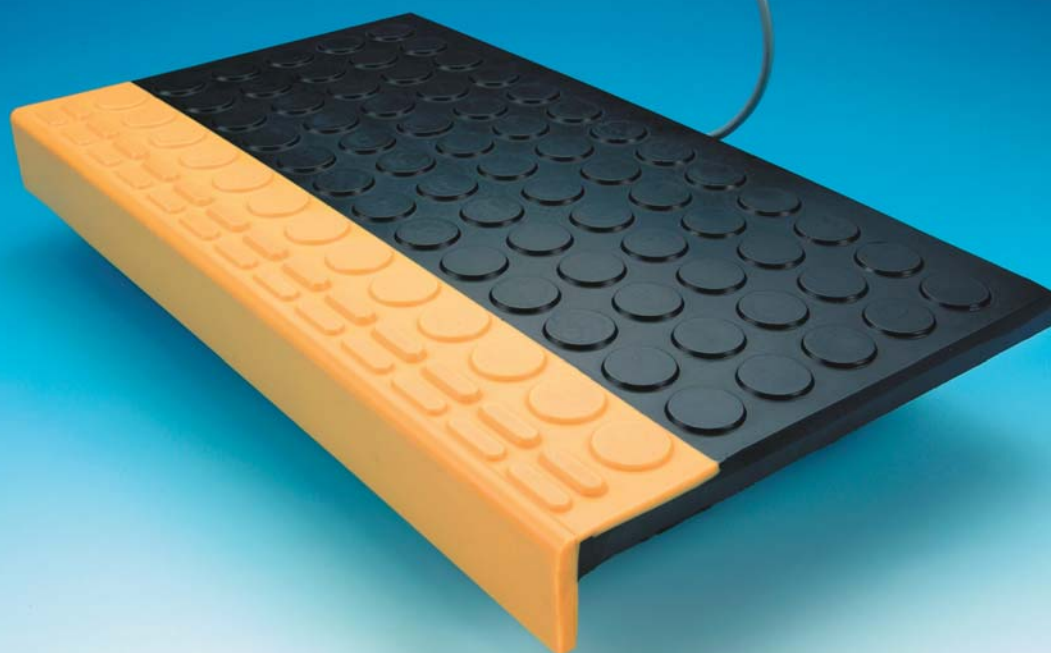


Stepping mat



WORLD OF SENSORIC WORLD OF SENSORIC

Stepping mat

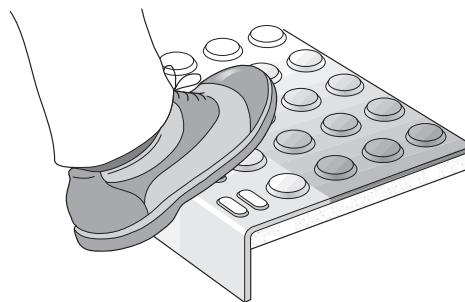
/// BBC
BIRCHER

Smart Access

Application and Function

Bircher Reglomat stepping mats are used to protect people from getting trapped in the doors of public transport vehicles. They safeguard the entrance area and therefore protect people against injury.

The function of the stepping mats corresponds to that of an electrical switch. When anyone steps on the surface of the mat, or a weight is placed on it, two electrical parallel contact surfaces are pressed together and the electrical circuit is made.



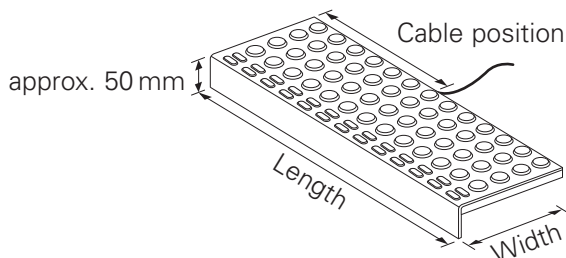
Customer Benefits

- Wide-area protection in the danger zones of vehicle doors
- Various individual sizes and shapes available
- Insensitive to the effects of weather and to contamination of the surface
- Can be used both as a safety element and for people-counting at the same time

Technical data

Moulding material	Polyurethane		
Dimensions	max. 1600 x 400 mm, min. 500 x 250 mm, thickness 11.4 mm		
Inactive zone	20 mm edge zone		
Manufacturing tolerance	Length and width = +1/-1.5 mm; thickness = +0.5/-1 mm		
Colour	black, yellow or black with front area yellow		
Surface structure	round studded (see picture)		
Weight	11.5 kg/m ²		
Ambient temperature	-25° C to +70° C (operation and storage)		
Loading capacity	1 x 2000 N/cm ² 1 mill. x 10000 N with test object 80 mm 5 mill. x 750 N with test object 80 mm, mat in combination with ES switching device		
Response time	50 ms with ESD3 switching device		
Actuating force	< 350 N (per EN 1760-1)		
Degree of protection	IP67		
Humidity	max. 90 % relative		
Insulating strength	> 1500 V AC		
No-load resistance	> 10 MOhm, other values on request		
Cable type	twin wire 2 x 0.34 mm ²		
Cable length	Standard 300 mm, with plug connector / customer-specific without plug connector, max. 5 m		
Composition (> 1 % share of weight)	- Polyurethane PUR (moulding material) - Fiberglass epoxy resin (contact surface substrate) - Copper (contact surfaces, cables)		
Chemical resistance of PUR	Weather, ozone ⊕	Oils, gasoline ⊕	⊕ No limits on use
	Water 20° ⊕	Solvents, acids ⊕	○ Certain limits on use
	Water 60° C ○		⊖ Use not recommended

Dimensions



Required ordering information

- Type: Stepping mat
- Shape / length x width
- Cable length
- Cable position (distance from edge)
- Colour

Your contact

BBC Bircher Smart Access

Wiesengasse 20
8222 Beringen
Switzerland
Phone +41 52 687 11 11
info@bircher.com
www.bircher.com

Note:

Technical details and recommendations concerning our products are based on experience and are an aid for the orientation of the user. Details stated in our brochures and data sheets do not guarantee special properties of the products. This does not apply to special product properties confirmed in writing or individually on a case-by-case basis. Subject to technical alterations.