



## EsMatix 3

Safety switching device for  
protecting hazardous areas  
on machinery and plant

**Fast, safe, compact**

- Short response time
- EDM – external device monitoring
- Program & diagnostic display

# EsMatix 3

## Application

### Situation

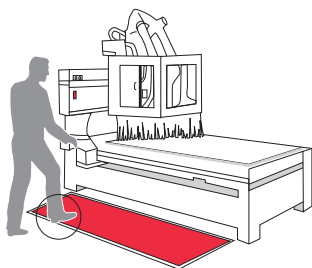
Machine safety

### Solution

- Protection of hazardous areas near machinery when using contact mats combined with an EsMatix 3 safety switching device

### Tip

- Larger hazardous areas can be protected with several contact mats



### Situation

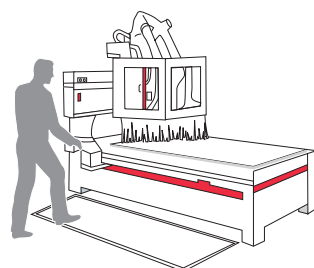
Milling or grinding machine with automatic protective door

### Solution

- Reliable protection from moving machinery parts with safety edges and EsMatix 3 safety switching device

### Benefit

- EsMatix 3 can monitor two tactile sensors at the same time (e.g. safety edge and contact mat)



## Ordering information

Article no.	Description
<b>364283</b>	<b>EsMatix 3</b> Safety switching device
<b>364284</b>	<b>EsMatix 3.D</b> Safety switching device (inverted status output)



## Supplementary products

### ClickLine

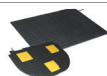
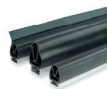
Electric safety edge rubber profiles with click-fit foot

### CoverLine

Electric safety edge rubber profiles for clicking in at the side

### Contact mats

Electric pushbutton for activating and deactivating machines and devices



## Technical data

### Mechanical data

Material	Polyamide red-grey
Dimensions	22.5 × 92 × 85 mm (W × H × D)
Weight	150 g
Connection type	Plug terminals
Mounting	DIN rail

### Electrical data

Supply voltage	24 VDC –20% to +20% 24 VAC –20% to +10%
Power consumption	Max. 3 VA
Inputs	For 1 or 2 sensors with 8.2 kOhm termination
Reset input	24 VACDC
Safety outputs	SSR, max. On resistance 2 Ohm, 24 VDC, max. 250 mA, internally protected with 300 mA fuse
Status output	24 VACDC, max. 250 mA
Response time (actuation)	< 5 ms
Recovery time	< 30 ms (reset after actuation)
Switch-on time	< 300 ms
External reset pulse (required)	> 100 ms
Displays	
Operation	Green
Safety shutdown	Orange
Fault (interruption)	Red

### Programmable functions

Reset (confirmation)	Automatic (automatic start) Manual (pushbutton) Manual (external)
Fall-delay time	Between 0 and 1000 ms (5 levels)
Input delay	0, 15, 30 or 45 ms
Relay status	EsMatix 3 EsMatix 3.D Error signal output Signal inverted

### Ambient conditions

Protection class of switching device	IP30
Operating temperature	–20 °C to +60 °C
Storage temperature	–40 °C to +70 °C
Air humidity	< 95% (non-condensing)

### Standards

Approvals	EN ISO 13849-1 (PL <sub>e</sub> , cat.3)
-----------	--

### Note

Technical details and recommendations concerning our products are based on experience and are an aid for the orientation of the user. Details stated in our brochures and data sheets do not guarantee special properties of the products. This does not apply to special product properties confirmed by us in writing or individually. Subject to technical alterations.

### BBC Bircher Smart Access

Wiesengasse 20  
8222 Beringen  
Switzerland  
Phone +41 52 687 11 11  
info@bircher.com  
www.bircher.com